

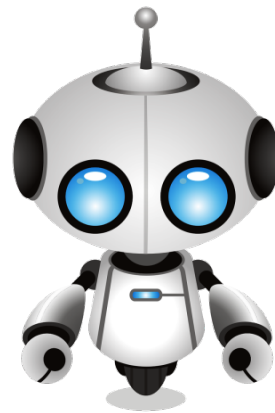
Helper Bot

Introduction

Netflix uses artificial intelligence to determine what movies you'll like. Amazon uses A.I. to predict what you'll buy. Now, CloudCard uses artificial intelligence to determine if a photo is approvable as an ID photo. CloudCard's new "Helper Bot" is a complex algorithm known as a neural network, which scans photos as they are uploaded and color codes them to let you know if they should be approved or denied.

Introduction

- Auto Cropping
- Auto Rotating
- Auto Grading
- Auto Feedback
- Auto Approval & Denial



Auto Cropping

- Helper Bot will perfectly crop photos that are submitted by students.
- This photo has far too much margin to be used as an ID photo.
- Helper Bot recognizes this and makes the necessary changes.



Results

- Helper Bot has identified the face in the image, and cropped the photo to a square aspect ratio (customizable).
- Helper Bot eliminates the possibility of student cropping error.
- This picture can now be used as an ID photo.



Auto Rotating

- The new Apple and LG phones will often strip the metadata from submitted photos.
- As a result, photos are submitted sideways.
- This does not stop Helper Bot from salvaging the image.



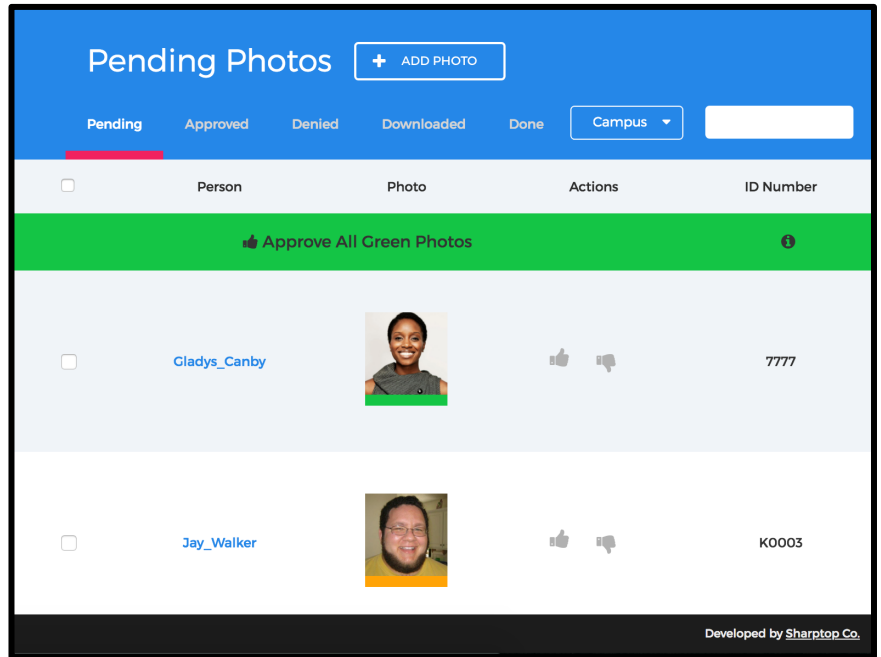
Results

- Helper Bot identifies the face and rotates the photo to the right position.
- The photo is flipped to its correct orientation within seconds.
- Helper Bot will keep the original image within the admin interface for reference.



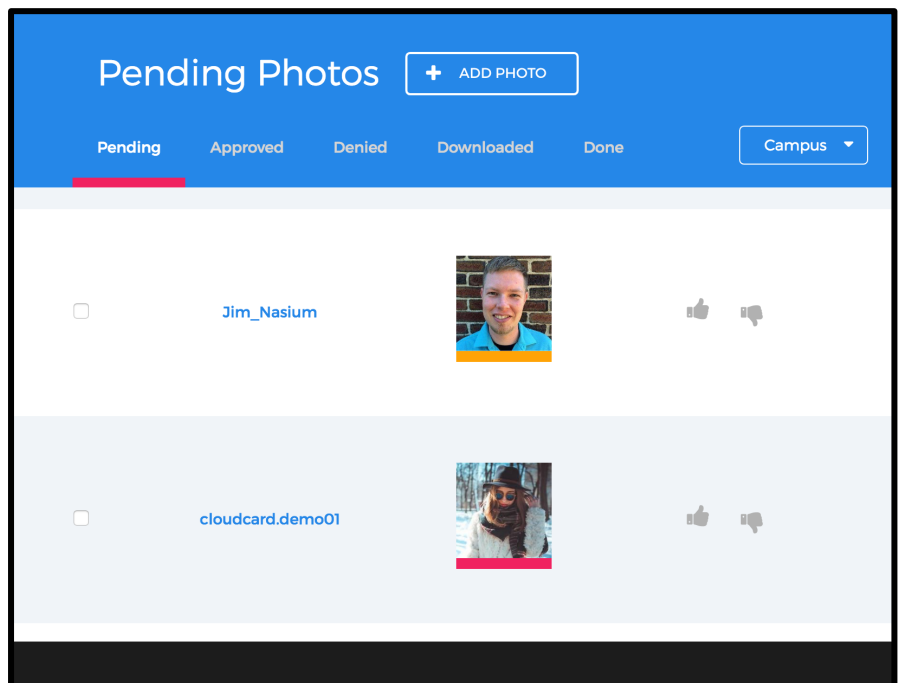
Auto Grading

- Photos are analyzed, graded, and categorized.
- They are sorted according to their color.
- Approve all green photos with the click of a button.



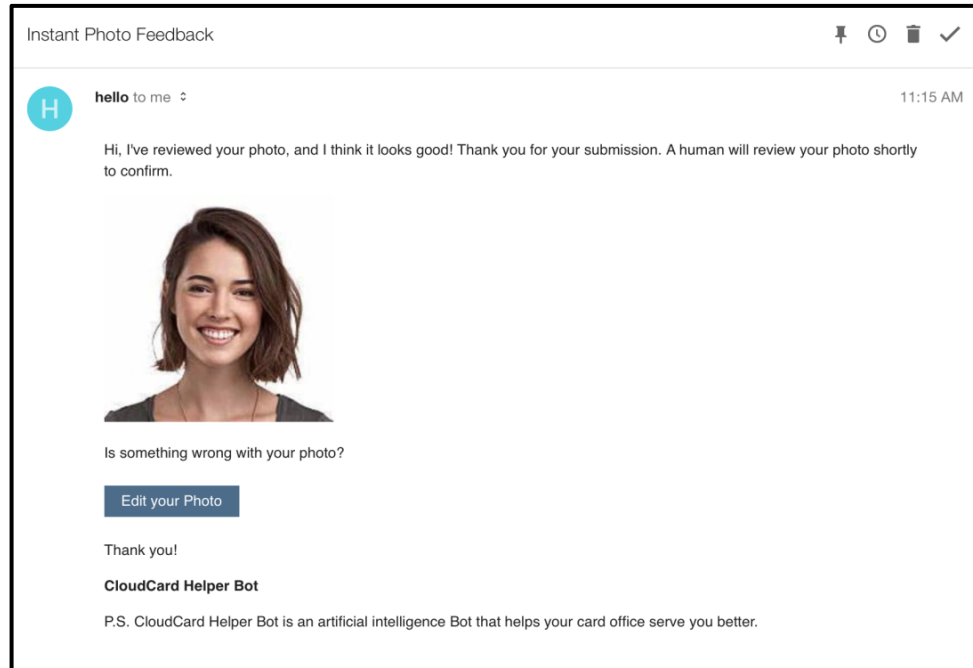
Continued

- Green photos are approvable, yellow are questionable, and red should be denied
- Use the thumbs up or down buttons to approve and deny photos



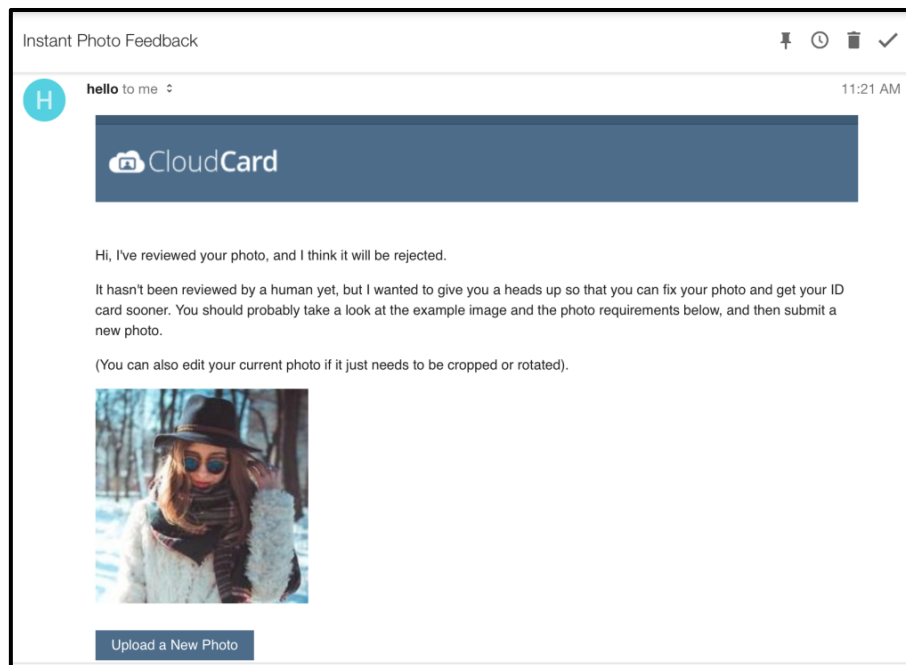
Auto Feedback

- When a photo is submitted, auto feedback is sent to the student's email.
- If the ID photo is good, Helper Bot will let the student know that their photo will probably be approved.



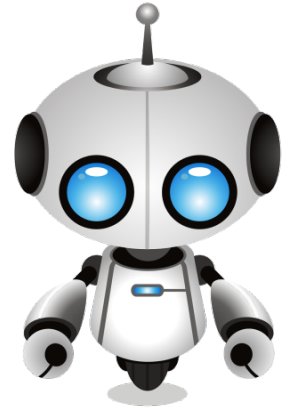
Continued

- Improper ID photos are often submitted by students.
- Helper bot gives instant photo feedback telling the student their photo will likely be denied.
- He provides a new link for submitting a proper photo.



Auto Approval & Denial

- Helper Bot has been trained with thousands of different photos to help him identify a quality ID photo.
- Once you accumulate more photos, he can be customized to your card office.
- When you get more comfortable with him, you can allow him to automatically approve and deny photos.
- Helper bot is continuously learning. The more photos that you receive, the better he becomes.



info@OnlinePhotoSubmission.com
